

Intro

Lasse Dahlberg

Andante ♩ = 96

marcato

4

7

p

11

cresc.

15

marcato

18

21

p

25

cresc. *ff*

Uvertyr

Fanfare I

Lasse Dahlberg

♩ = 96

6

f

9

12

16

Fanfare II (rightward)

3

21

p *f*

25

29

Fanfare III (to left)

33

p

36

40

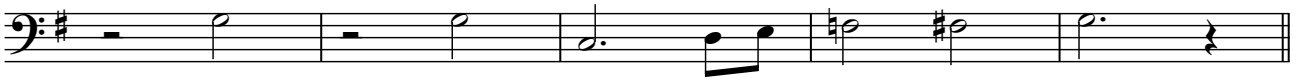
con sentimento

p

44

Tuba

49



54



57



60



63



67

Fanfare IV

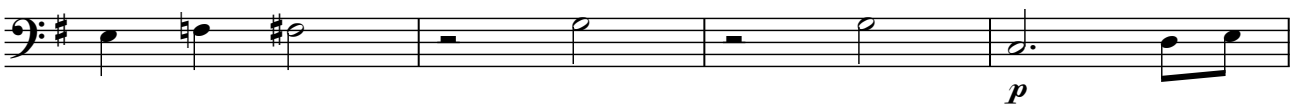


71

espressivo



75



79



83



88



Tuba Into

Lasse Dahlberg

$\text{♩} = 70$ *amoroso*

3

8

13

19 *marcato* *sim.*
fp

24

29 *soft*

34

38 *sim.*

41

44

47

50



53

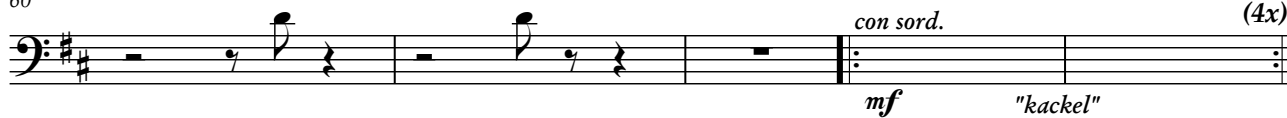


56

$\text{♩} = 90$ *aggressivt marcato*



60



65

Humoresque



67



69



71



73



75

aggressivt marcato



78



82

leggiero con sord.

(4x)



85



87



89



91



93



95



98



Post

Lasse Dahlberg

Animato ♩ = 80



Tuba

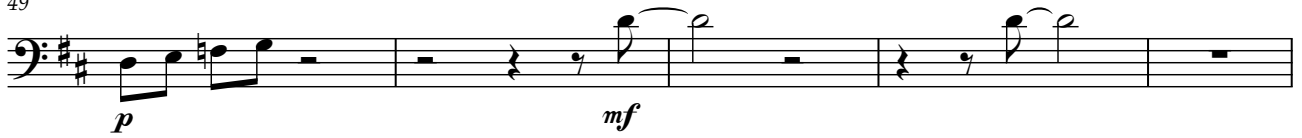
38



43



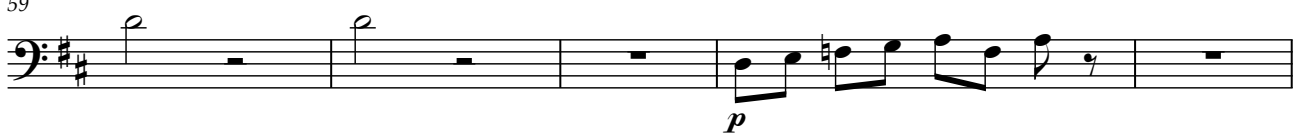
49



54



59



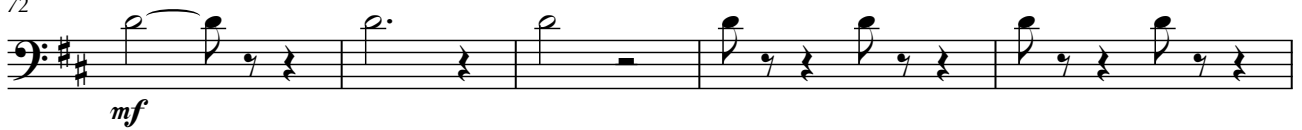
64



68



72



77



80



83



86



89



92



95



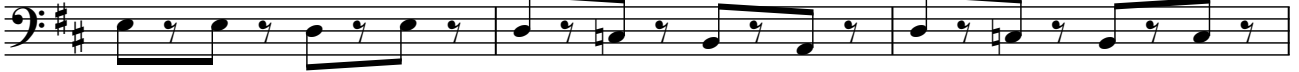
98



101



104



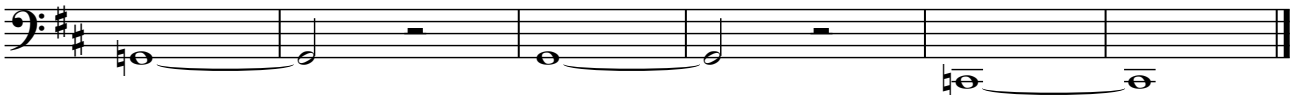
107



110



116

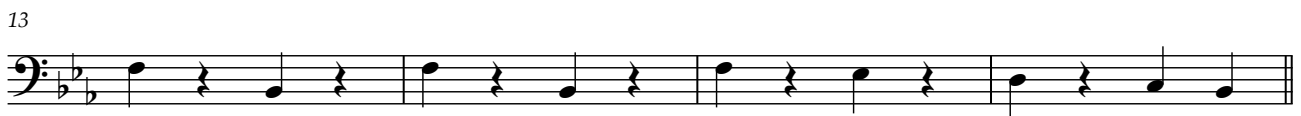
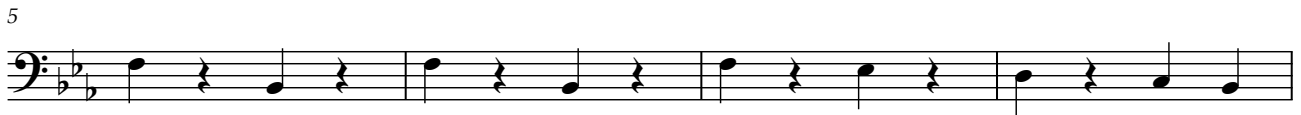


Tuba

Circus

Lasse Dahlberg

Festivo ♩ = 138



89



93



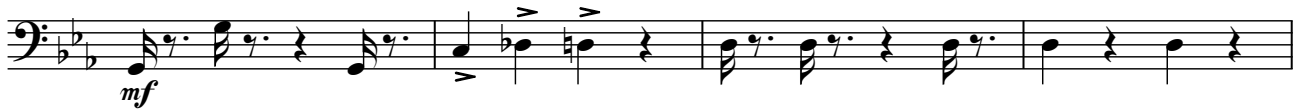
97



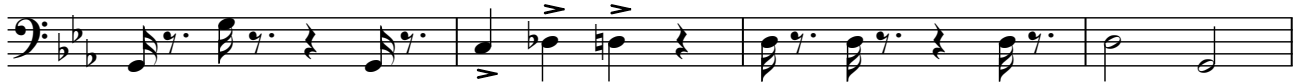
101



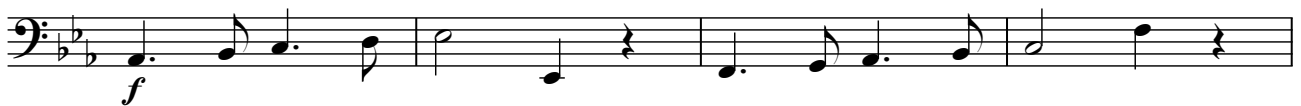
105 Festivo



109



113



117



121 Festivo



125



129



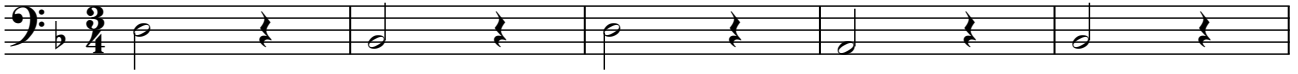
133

*repeat and fade*

Flag Play vals

Lasse Dahlberg

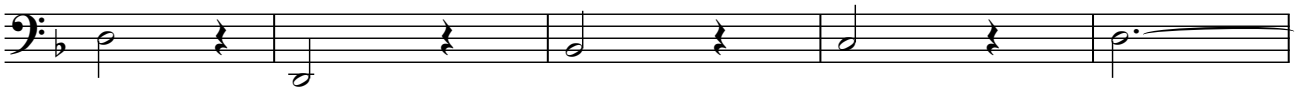
♩ = 144



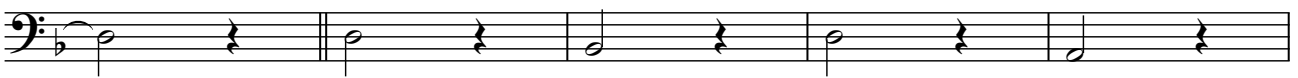
6



11



16



21



27

